

Conservative Endodontics



Bassi Logic™

Next generation heat treatment for *safety* & efficiency.

- **Designed for Safety & Efficiency**

Next generation heat treatment retains sharpness with great flexibility.

- **Cuts Like Steel**

Completes instrumentation in a third less time than leading single file systems†.

- **Structure-Preserving Flexibility**

Significantly greater resistance to cyclic fatigue compared with other single file systems*.

- **Single-File Shaping Simplicity**

Bassi Logic™ can be used in reciprocating or continuous rotary motors.

- **Shaped to Clean**

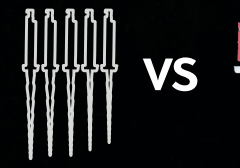
Every file is designed with a specific helix that promotes the highest cutting efficiency.

- **Conservative Tapers**

No longer is flaring, brushing or straight line access needed.

30%
Faster Instrumentation

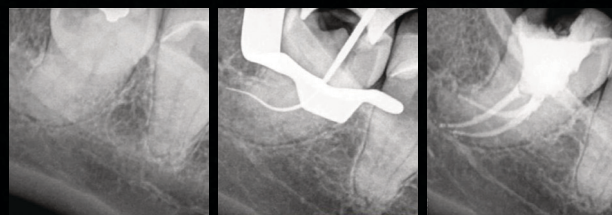
3.5x
Cyclic Fatigue Resistance



Clinical Case by Hugo Bastos, DDS



Clinical Case by Frederico Laperriere, DDS



†Brazilian Dental Journal (2016) 27(2): 217-222

*IEJ Iranian Endodontic Journal 2017;12(4): 468-473

BassiLogic™

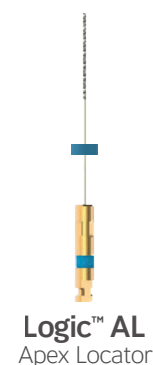
Conservative. Efficient. Advanced.



.01 TAPER	
SIZE	
25/.01	 Quadruple Helix Cross Section 350 RPM Torque: 1 Ncm
30/.01	
35/.01	
40/.01	
45/.01	
50/.01	

.03 TAPER	
SIZE	
15/.03	 Square Cross Section 350-600 RPM Torque: 2 Ncm

.05 TAPER	
SIZE	
15/.05	 Square Cross Section 600-950 RPM Torque: 2 Ncm



.01 TAPER	
SIZE	
25/.01	 Quadruple Helix Cross Section 350 RPM Torque: 1 Ncm
30/.01	



.03 TAPER	
SIZE	
25/.03	 Double Helix Cross Section 350-600 RPM Torque: 2 Ncm
30/.03	
35/.03	
40/.03	

.04 TAPER	
SIZE	
25/.04	 Triple Helix Cross Section 600-950 RPM Torque: 2 Ncm

.05 TAPER	
SIZE	
25/.05	 Double Helix Cross Section 600-950 RPM Torque: 4 Ncm
30/.05	
35/.05	
40/.05	

.06 TAPER	
SIZE	
25/.06	 Double Helix Cross Section 600-950 RPM Torque: 4 Ncm



.10 TAPER	
SIZE	
30/.10	 Double Helix Cross Section 600-900 RPM Torque: 4 Ncm

.08 TAPER	
SIZE	
25/.08	 Triple Helix Cross Section 600-900 RPM Torque: 4 Ncm

.06 TAPER	
SIZE	
20/.06	 Triple Helix Cross Section 350 RPM Torque: 1.5 Ncm



Logic™ Resin Block
Practice blocks perfect for training



Hand Plugger Kit

TIPS	
	35mm & 70mm
	40mm & 80mm
	50mm & 100mm
	60mm & 120mm



Gutta-Percha Points
.03, .04, .05, .06 tapers

Bassi™
(800) 234-0045
BassiEndo.com

ref #: 032019aee

| Logic™ Files are available in 21mm & 25mm, except the Logic™ AL which is 25mm only.